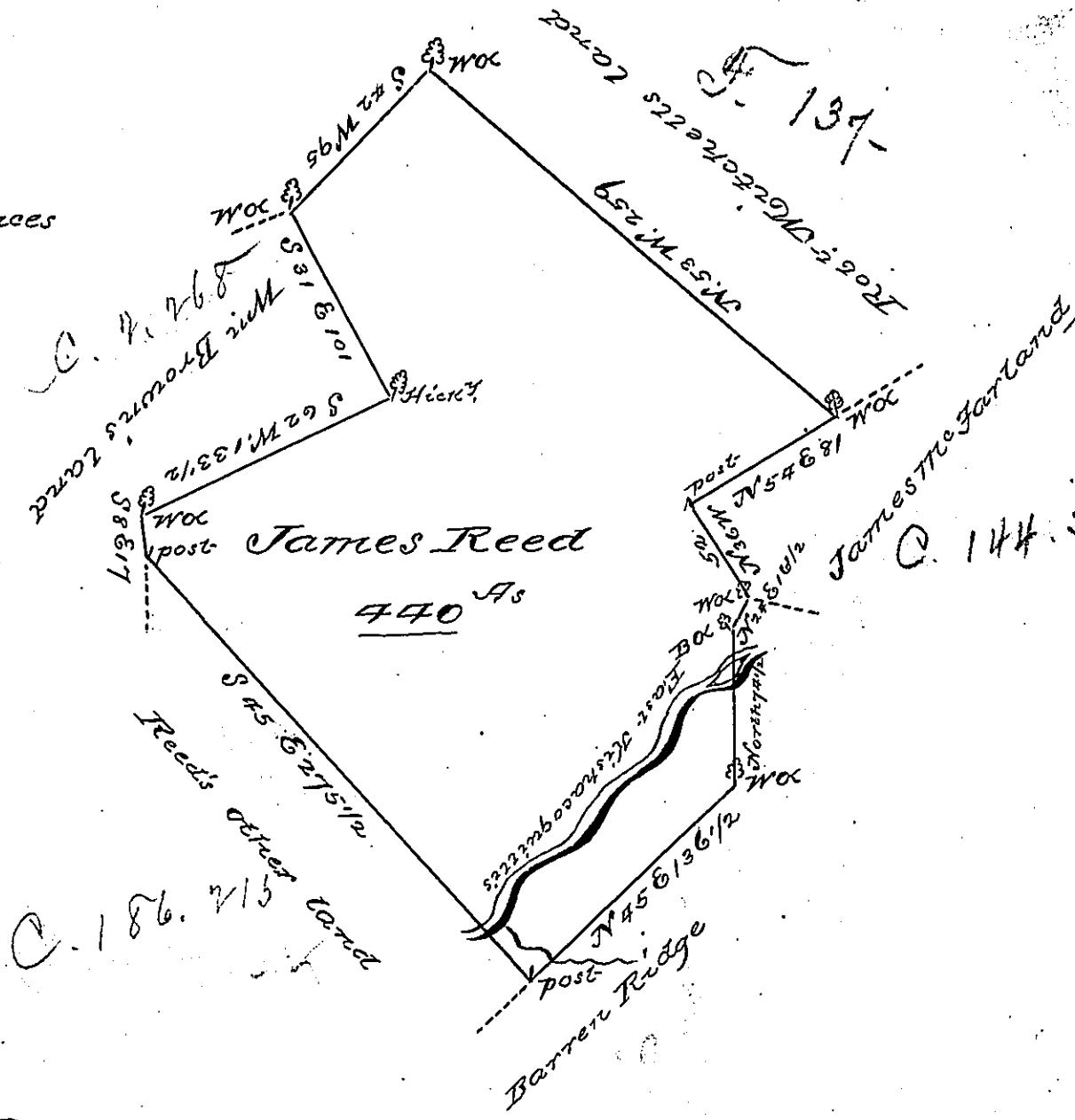


Courses	Distances
N 45 E	136 1/2
N 07 E	77 1/2
N 27 E	16 1/2
N 36 W	52
N 54 E	81
N 53 W	259
S 42 W	95
S 31 E	101
S 62 W	133 1/2
S 8 E	17
S 45 E	275 1/2



The Draught of a tract of land situate in Armagh Township Cumberland County containing four hundred & forty acres & the allowance of Six p^{ts} Cent for Roads &c^d Surveyed for James Reed Dec^d the 16th 1785 in pursuance of a Warrant from the Honourable the Vice President of the Supreme Executive Council Dated Nov^r the 30th 1785

pr^o Sam^l Lyon D^r
 To John Lukens Esq^r }
 Surveyor General }

IN TESTIMONY that the above is a copy of the original remaining on file in the Department of Internal Affairs of Pennsylvania, made conformably to an Act of Assembly approved the 16th day of February, 1833, I have hereunto set my Hand and caused the Seal of said Department to be affixed at Harrisburg, this second day of August 1898

James W. Patton
 Secretary of Internal Affairs.

